



DIXIE

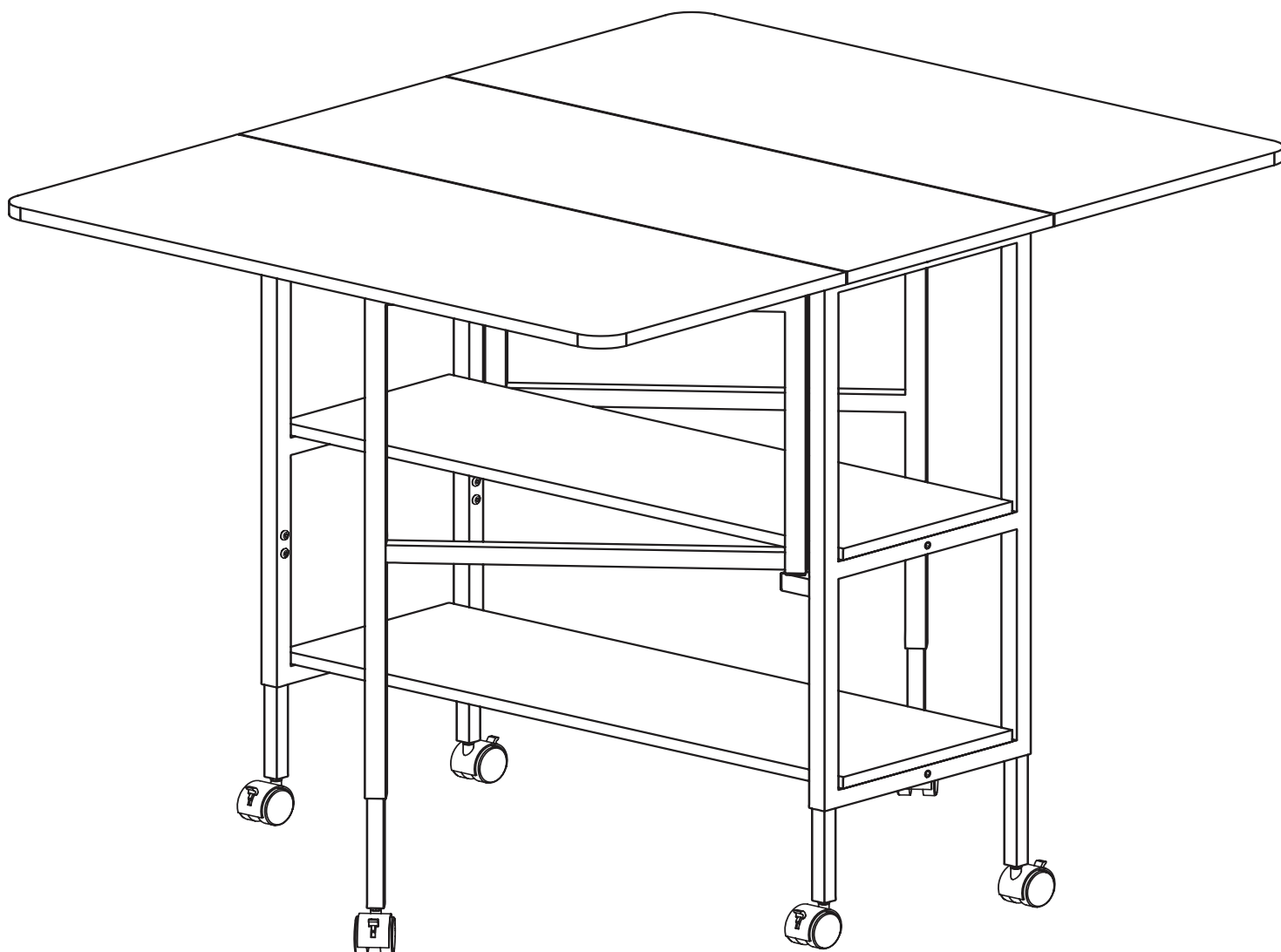
CUTTING TABLE

OWNER'S MANUAL

Assembly Instructions

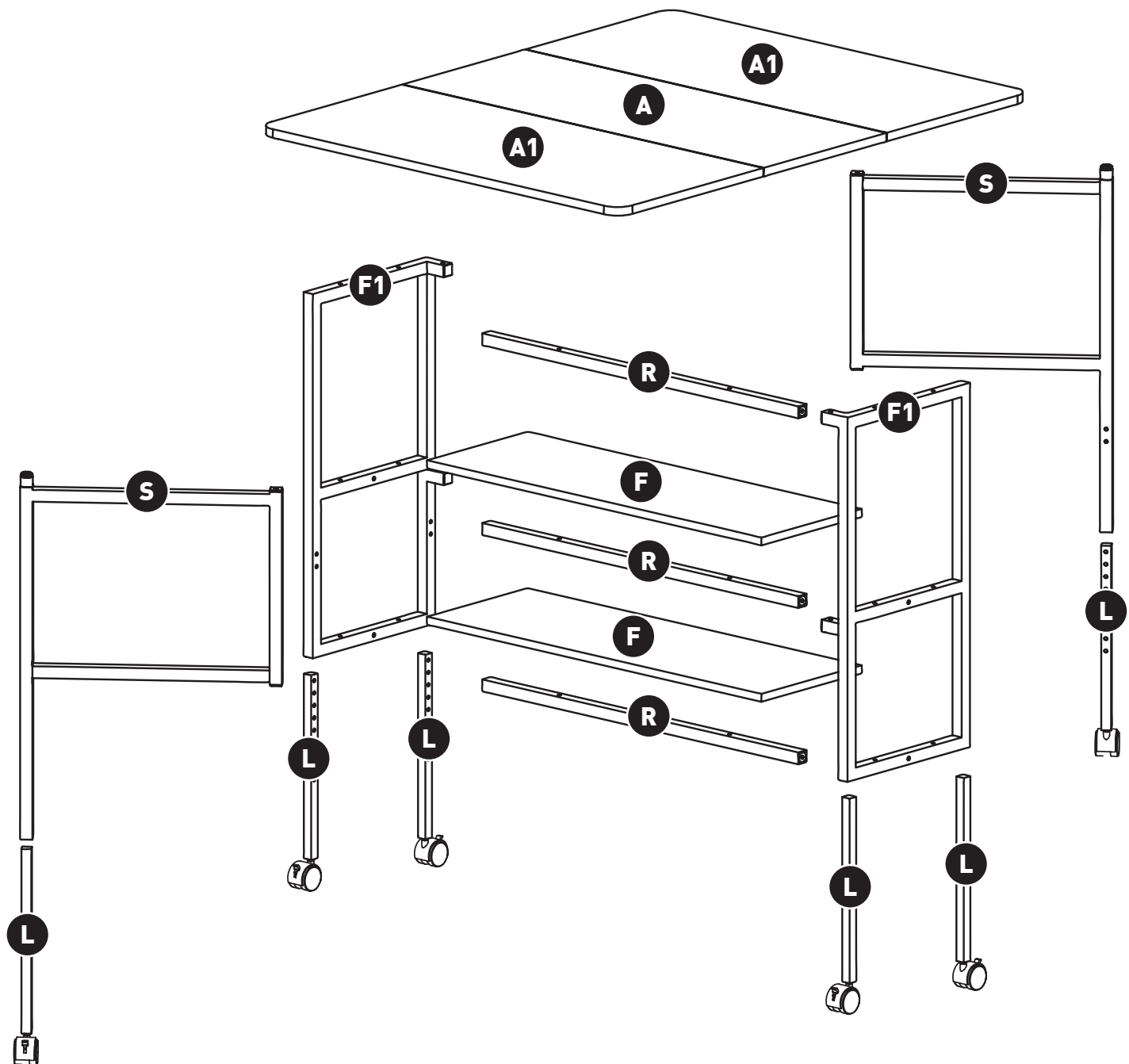
Model Numbers:

3401 | White



IMPORTANT: Please read these instructions before assembling!

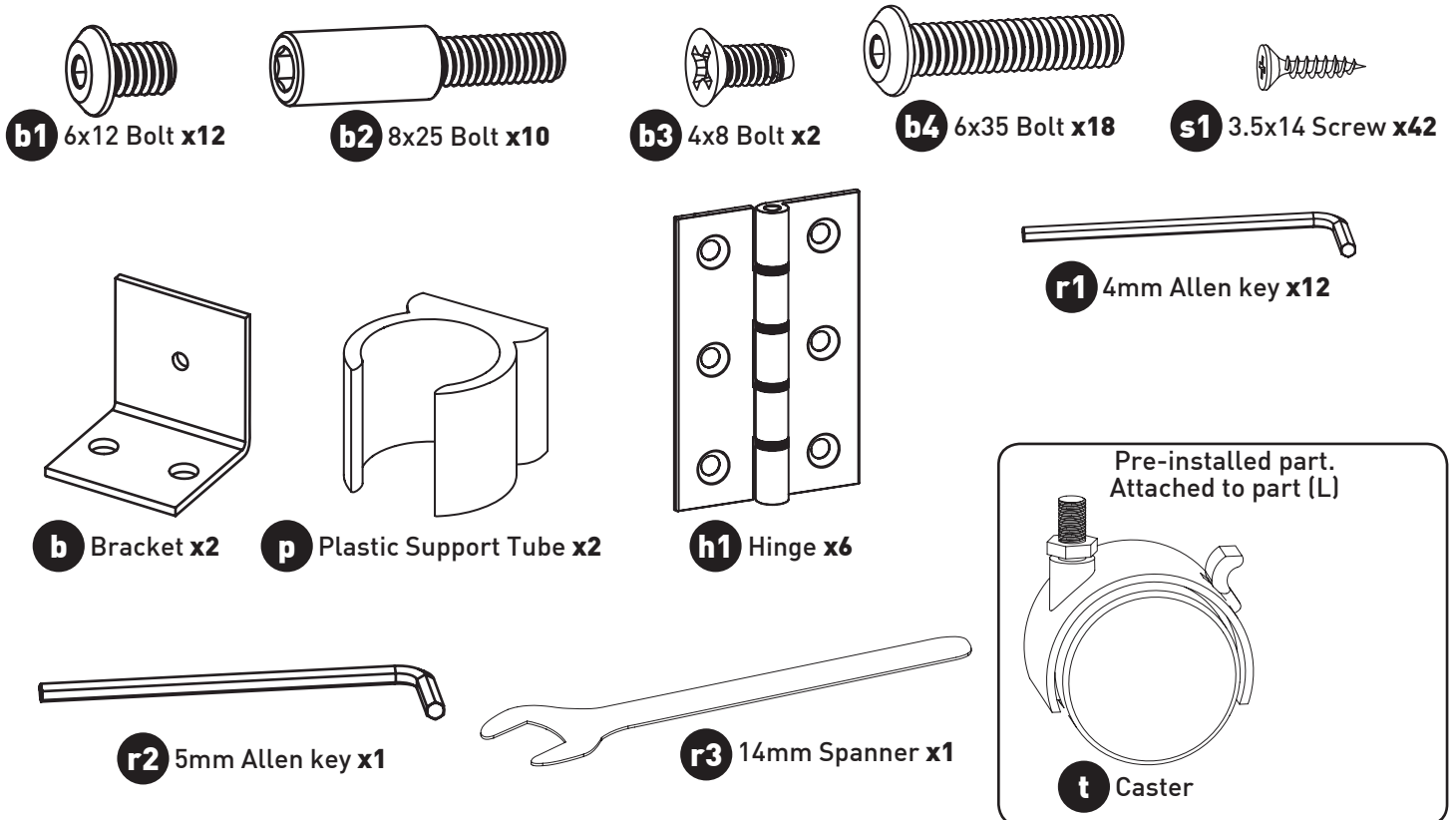
Parts List



ITEM	DESCRIPTION	QTY.	PACK.
A	Top panel	1	2 of 2
A1	Top leaf	2	2 of 2
F	Fixed shelf	2	2 of 2
F1	Frame leg support	2	1 of 2
S	Side leg supports	2	1 of 2
L	Adjustable leg with casters	6	1 of 2
R	Rail	3	1 of 2

Hardware Included

ITEM	DESCRIPTION	QTY.
b1	6x12 Bolt	12
b2	8x25 Bolt	10
b3	4x8 Bolt	2
b4	6x35 Bolt	18
B	Bracket	2
p	Plastic Support Tube	2
h1	Hinge	6
r1	4mm Allen key	1
r2	5mm Allen key	1
r3	14mm Spanner	1
s1	3.5x14 Screw	42
t	Caster (pre-installed)	6



Tools required

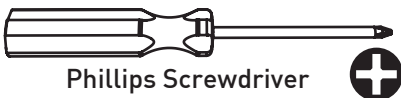
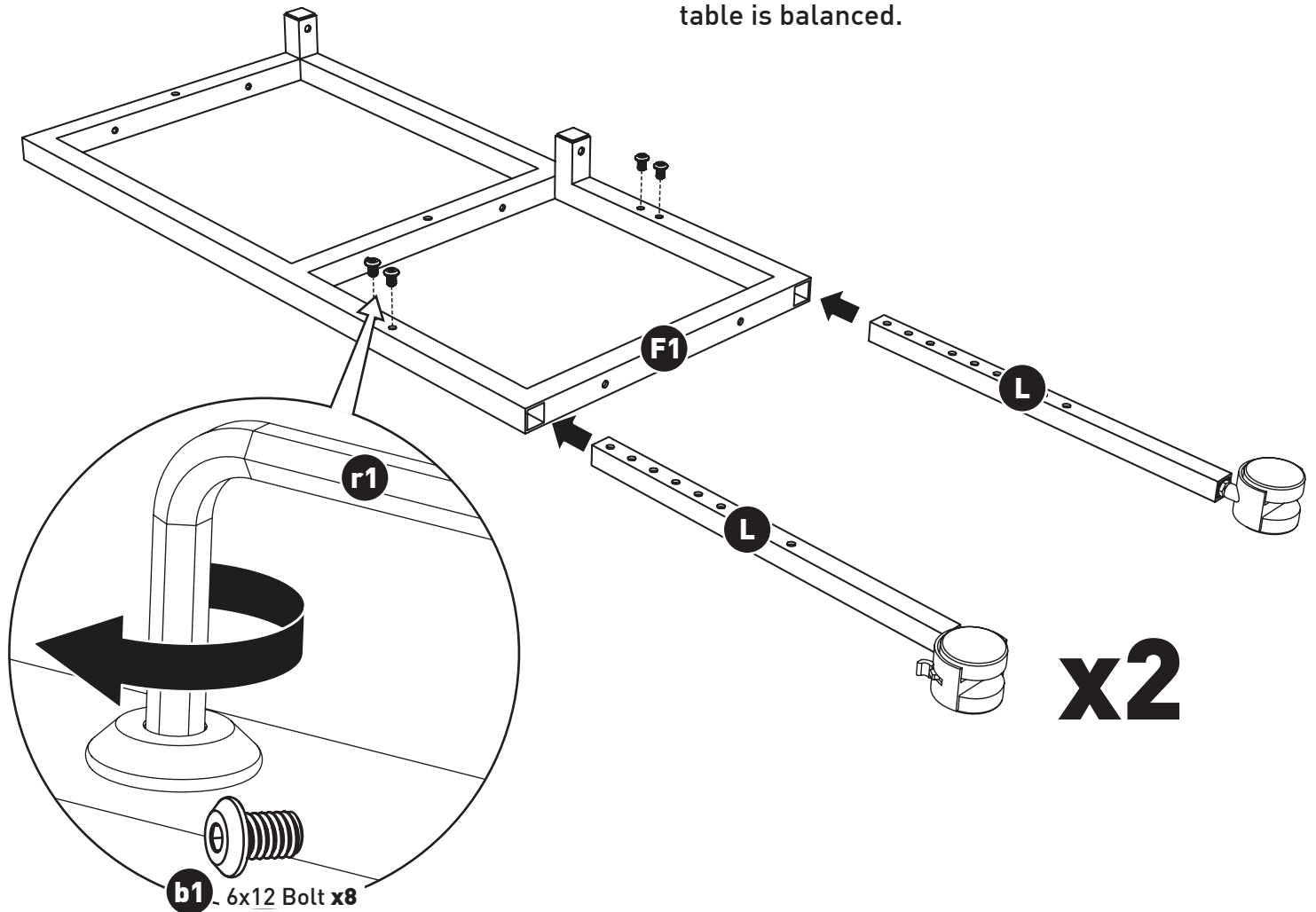


Table Assembly

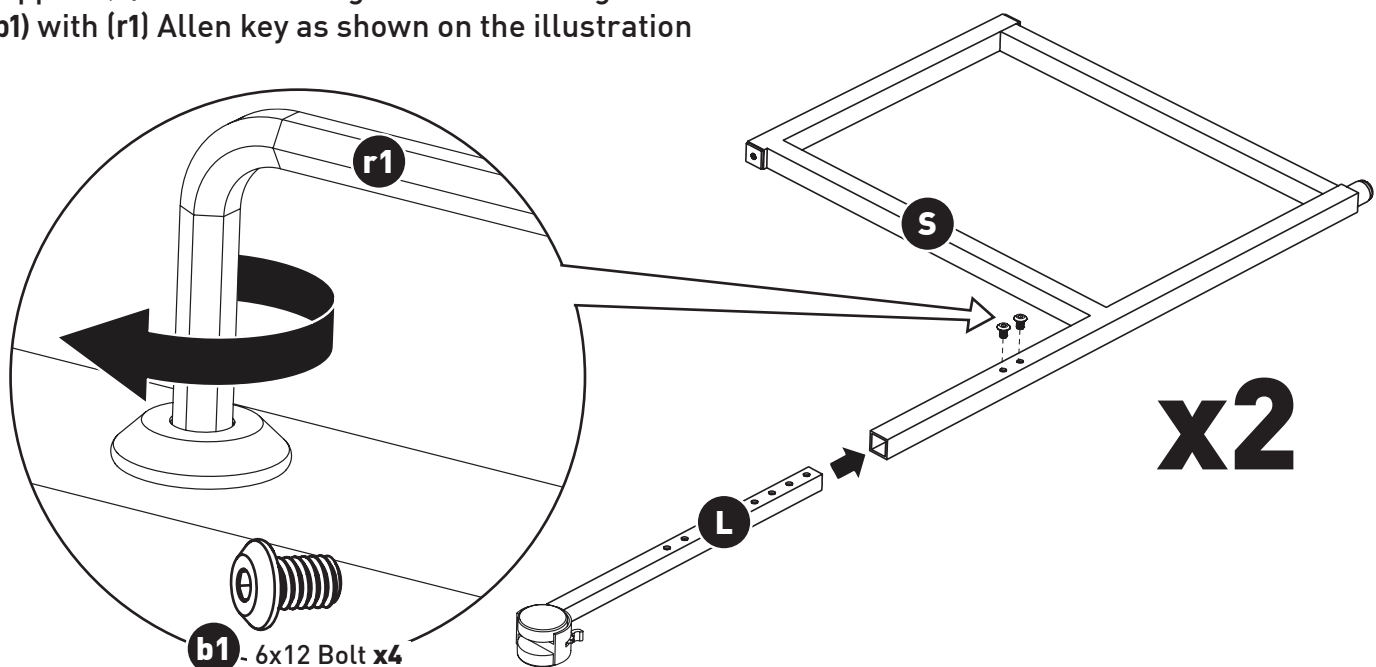
Step 1. Slide in adjustable legs (L) into frame legs support (F1) to desired height and lock using bolts

(b1) with (r1) Allen key as shown on the illustration below. Use the same height for all legs so the table is balanced.

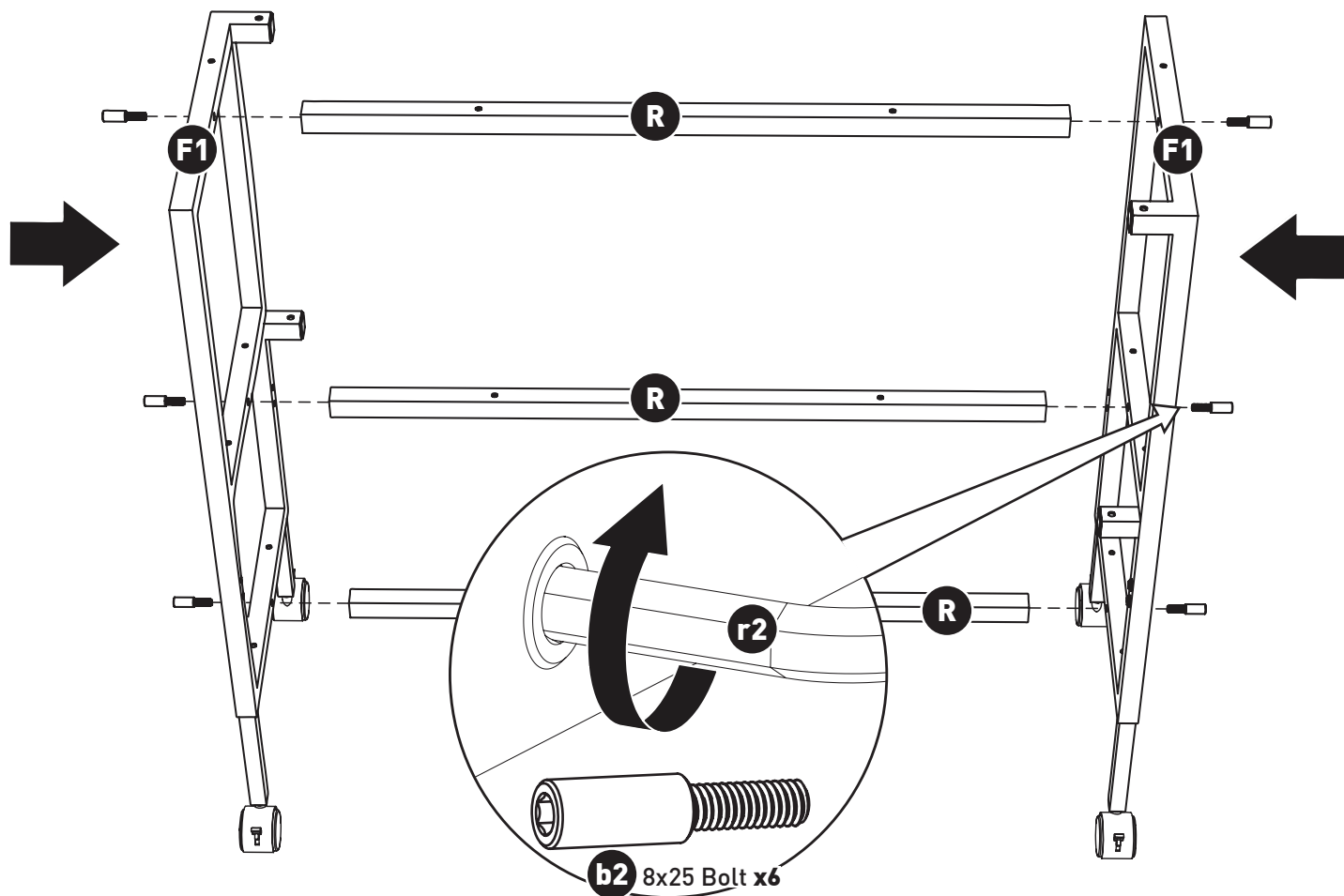


Step 2. Slide in adjustable legs (L) into side legs support (S) to desired height and lock using bolts (b1) with (r1) Allen key as shown on the illustration

below. Use the same height for all legs so the table is balanced.

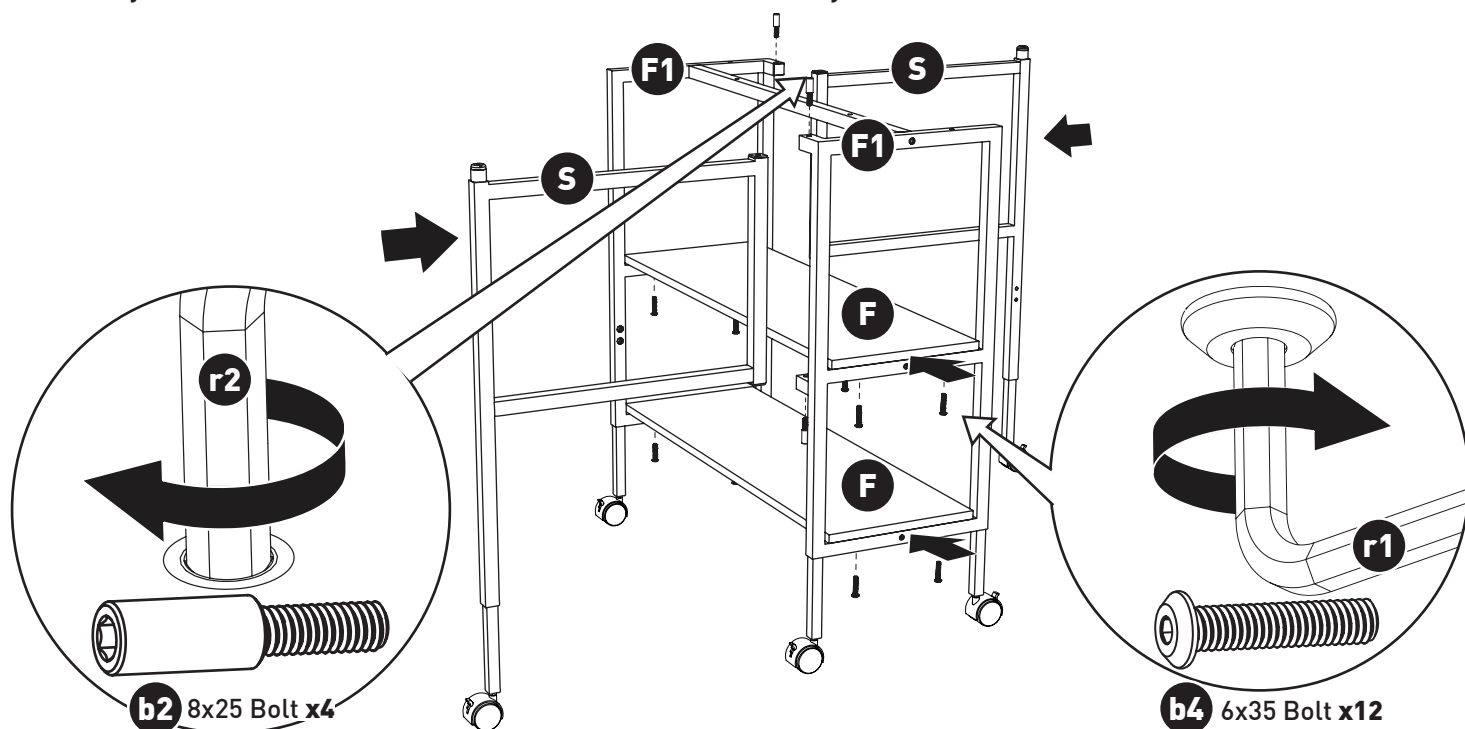


Step 3. Connect the two frame leg supports (F1) with three rails (R) using bolts (b2) using Allen key (r2) as shown on the illustration below.

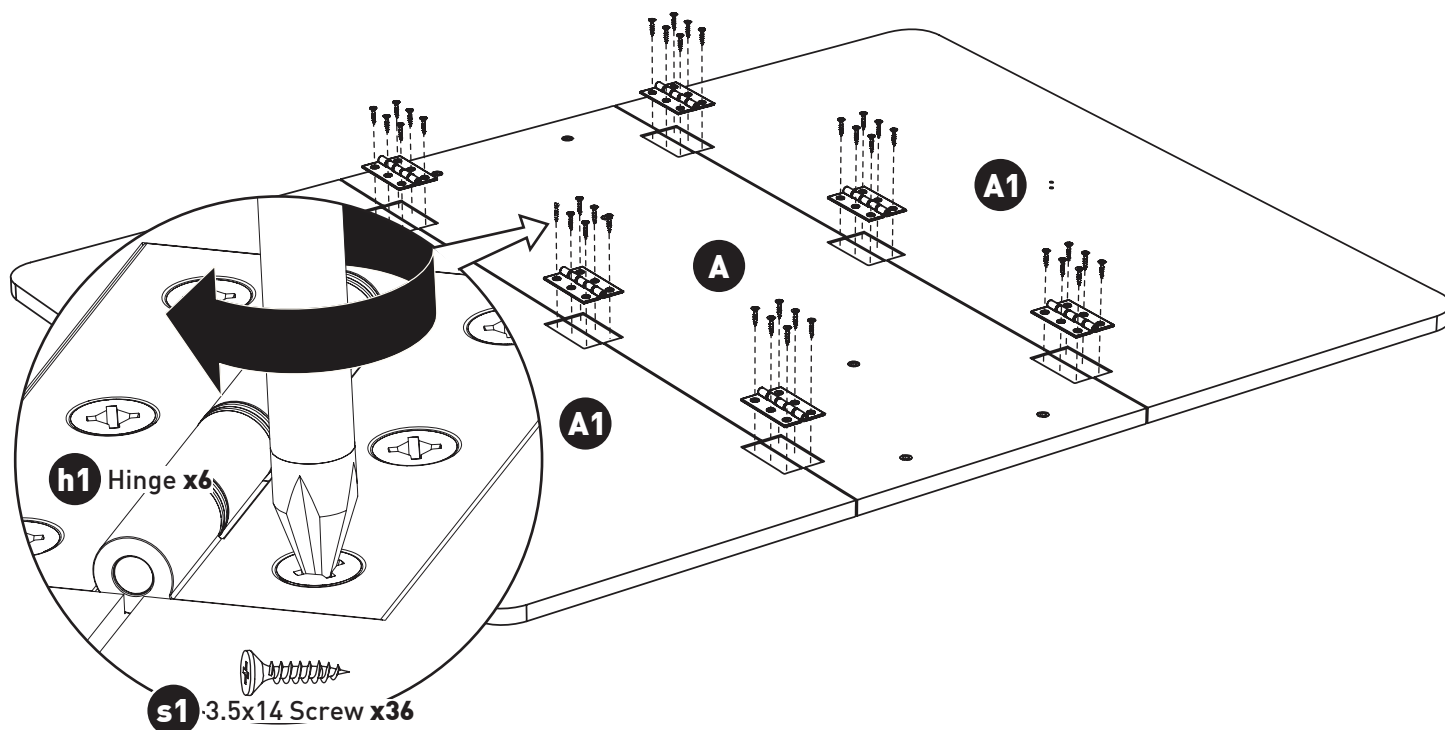


Step 4. Connect the two side leg supports (S) with leg frame assembly (F1) using bolts (b2) with Allen key (r2) as shown on the illustration below.

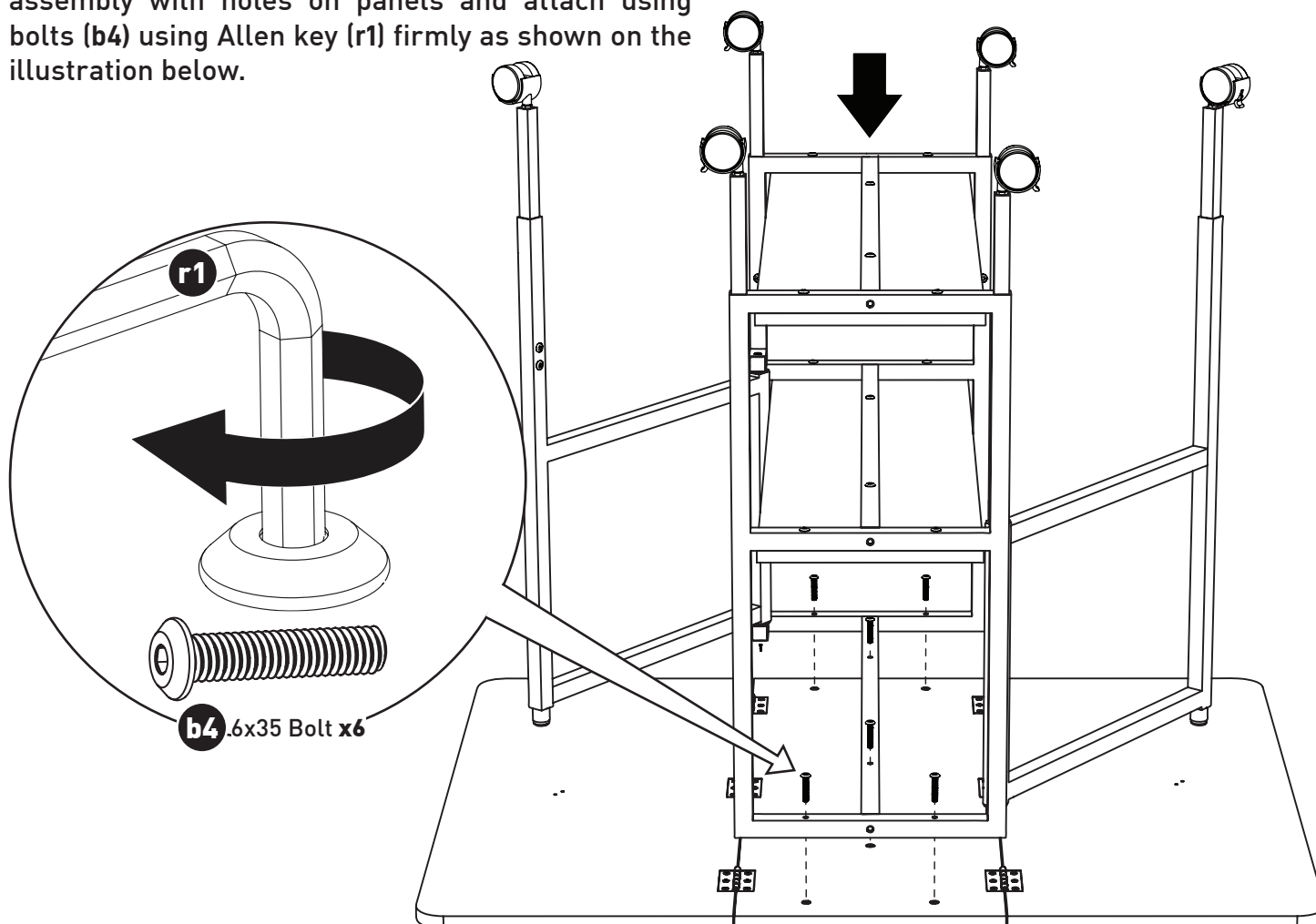
Place the Fixed shelf (F) on the leg frame assembly (F1) and attach using bolts (b4) using Allen key (r1) firmly as shown on the illustration below.



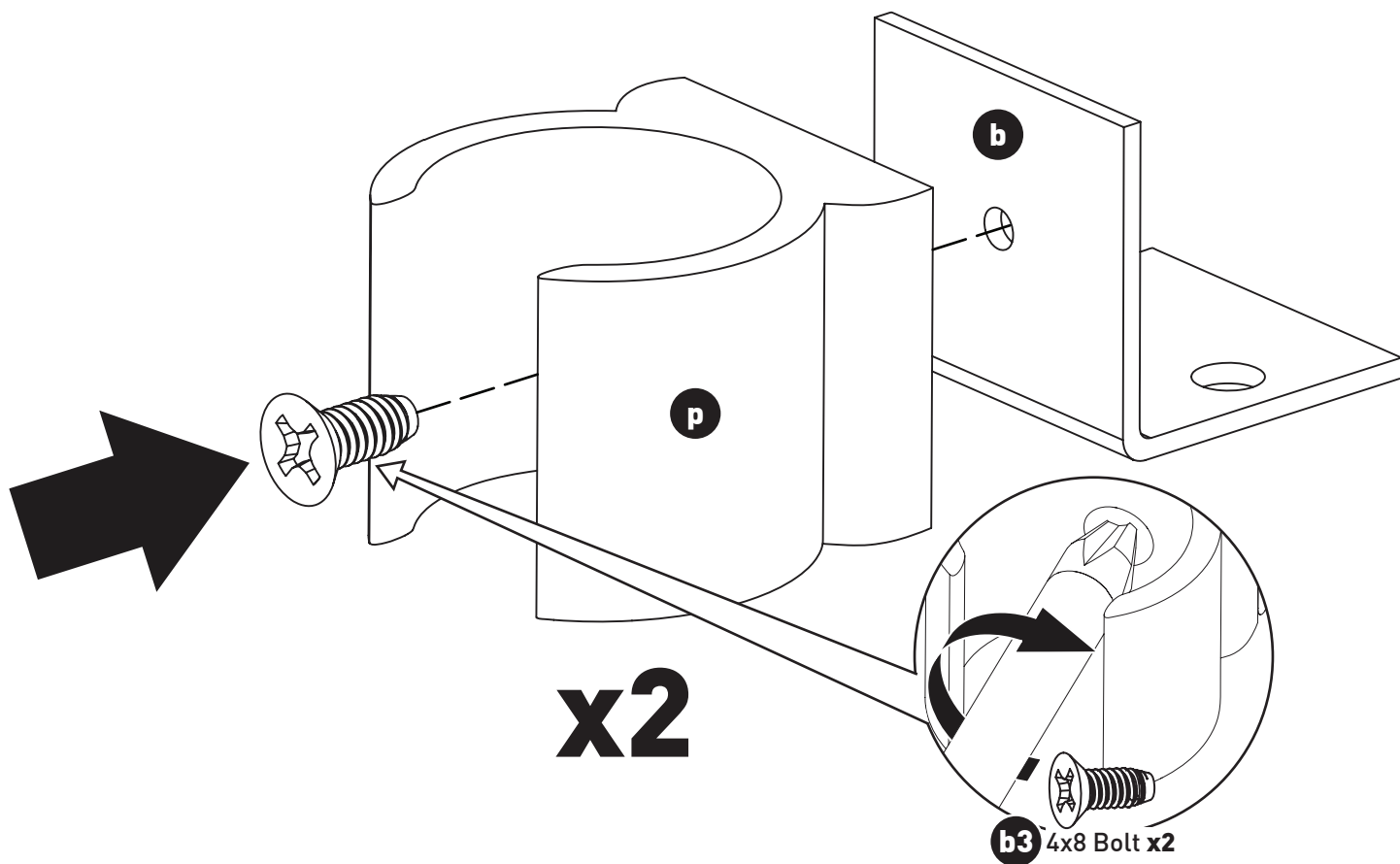
Step 5. Lay panels (A1), (A) on a clean soft surface. Attach hinges (h1) with screws (s1) as shown on the illustration below.



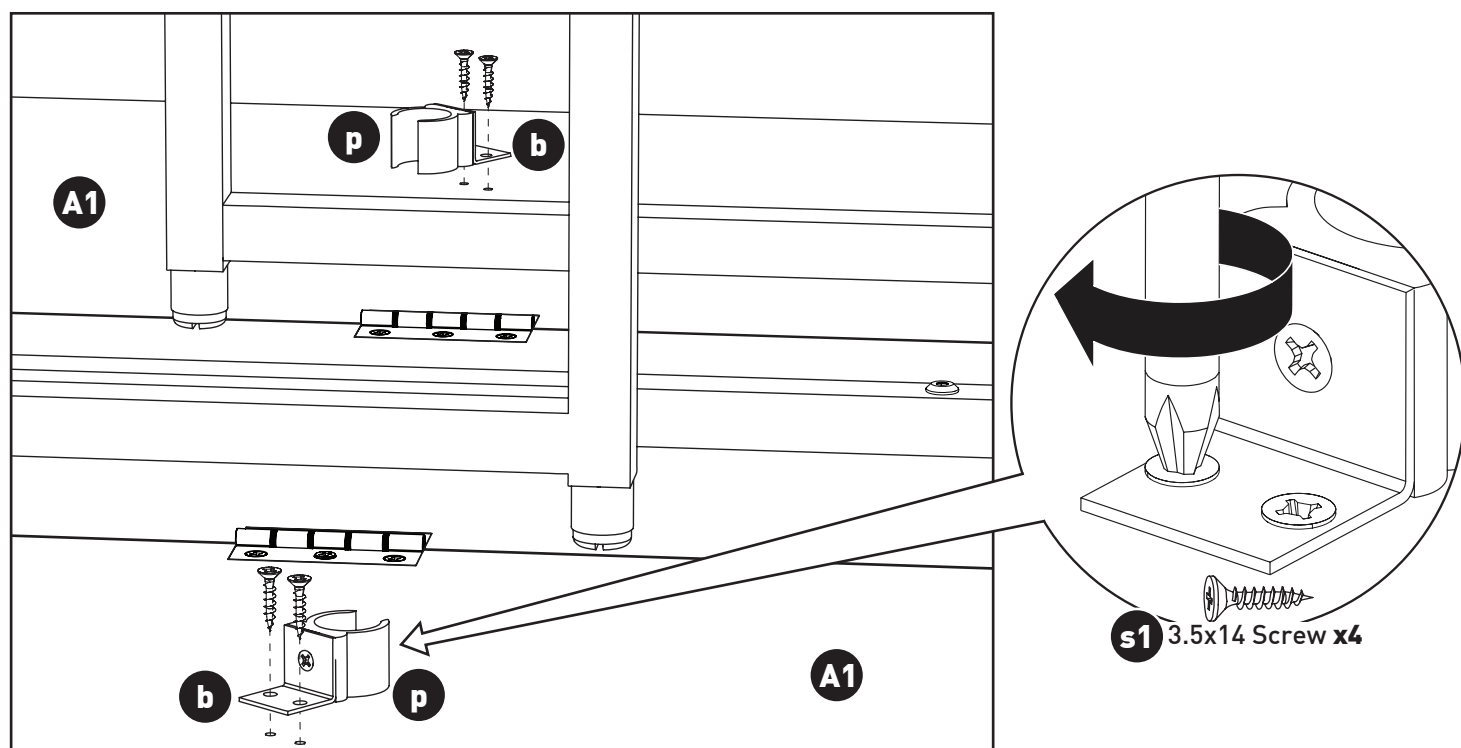
Step 6. Two people should flip and align entire leg assembly with holes on panels and attach using bolts (b4) using Allen key (r1) firmly as shown on the illustration below.



Step 7. Attach plastic support tube (p) with connector (b) using bolt (b3) firmly as shown on the illustration below.

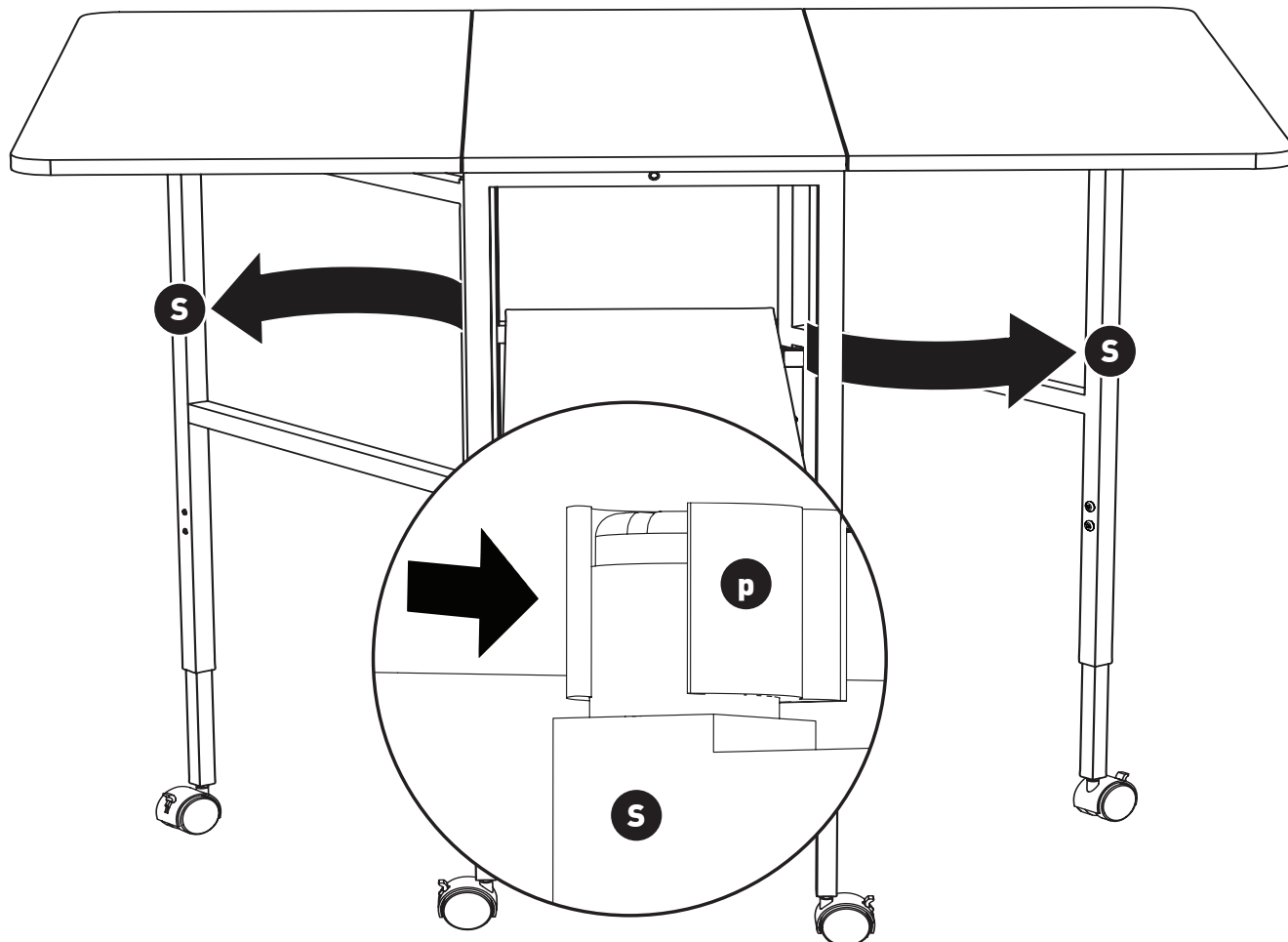
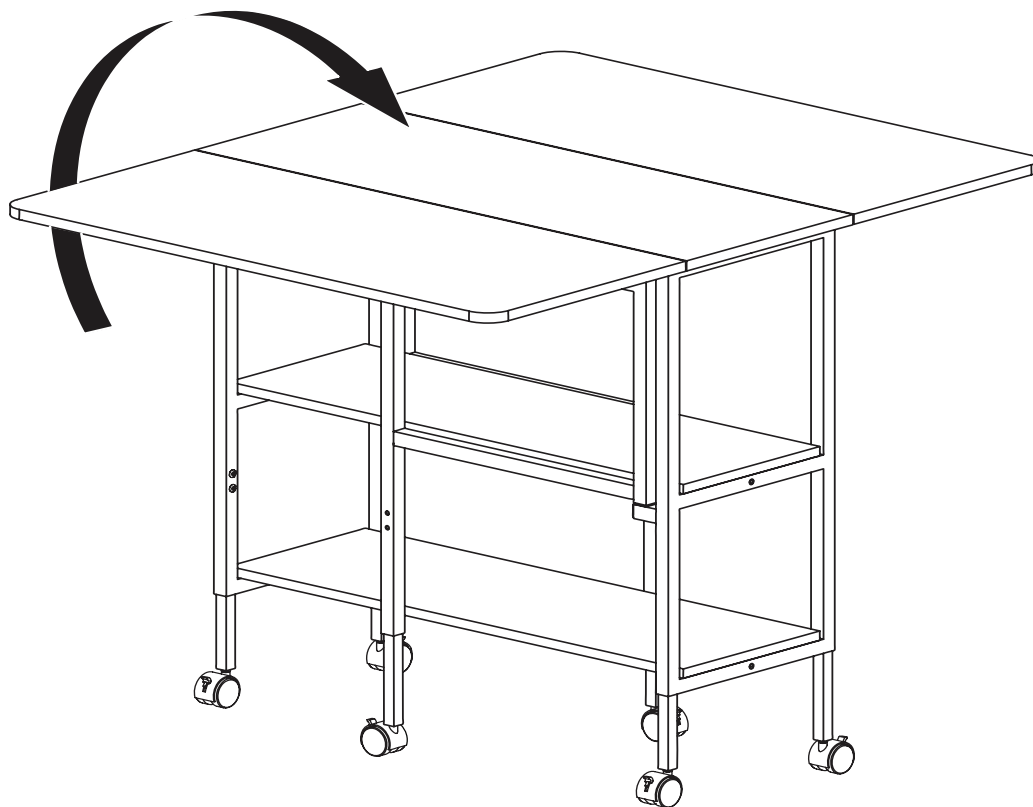


Step 8. Attach plastic support tube (p) and connector (b) assembly with screws (s1) firmly on both sides (A1) following the predrilled holes as shown on the illustration below.

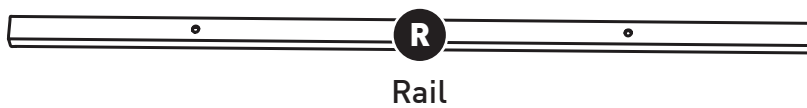
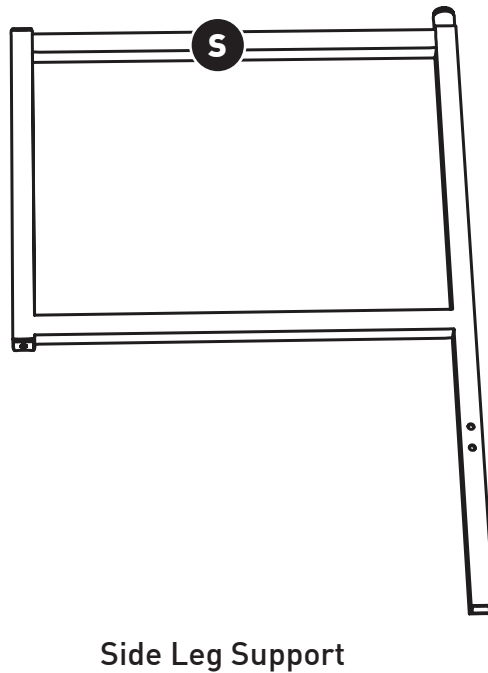
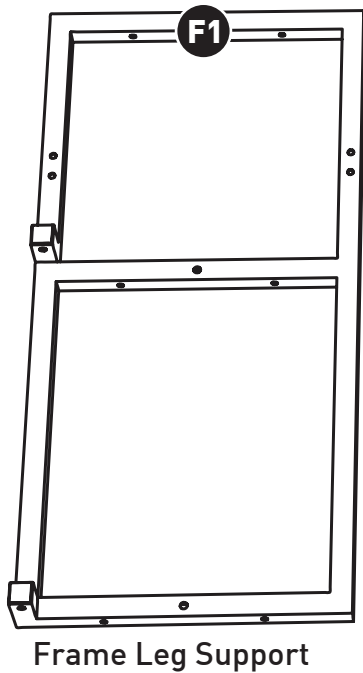
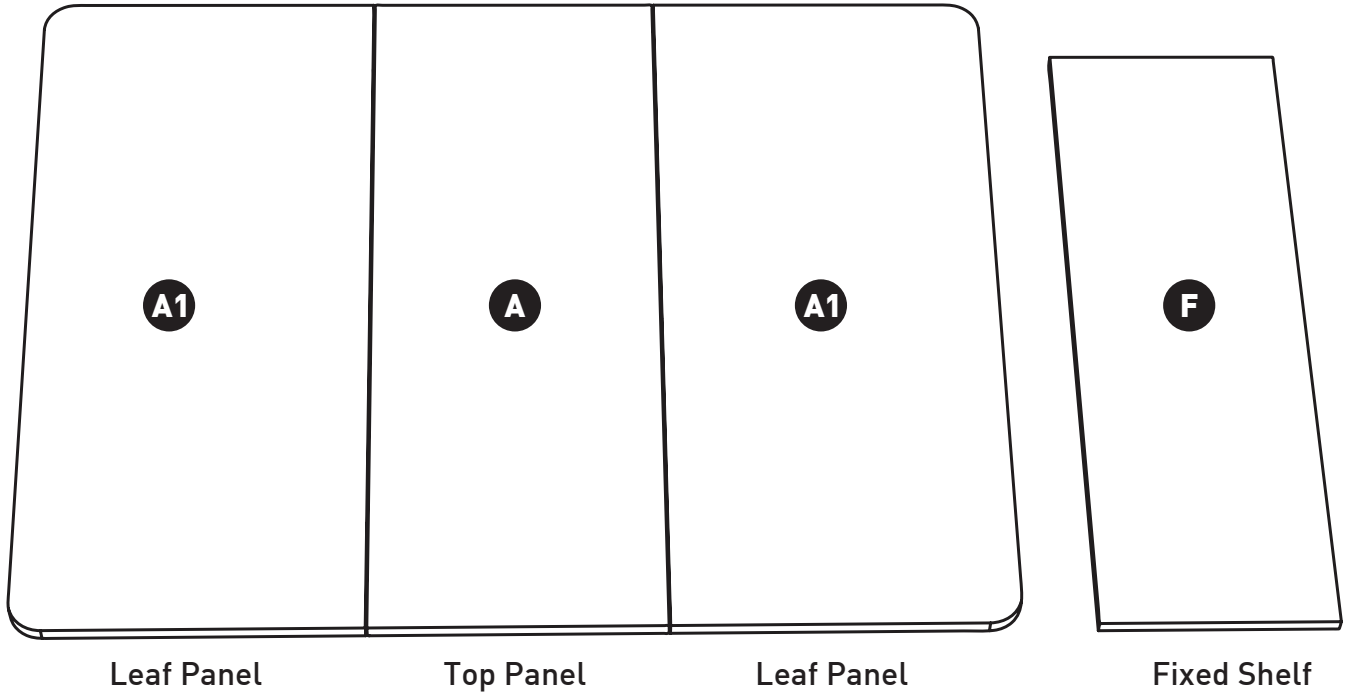


Two people should flip entire assembly and make sure all legs contact the ground and side leg

supports are properly snapped to its connectors on both side before use.



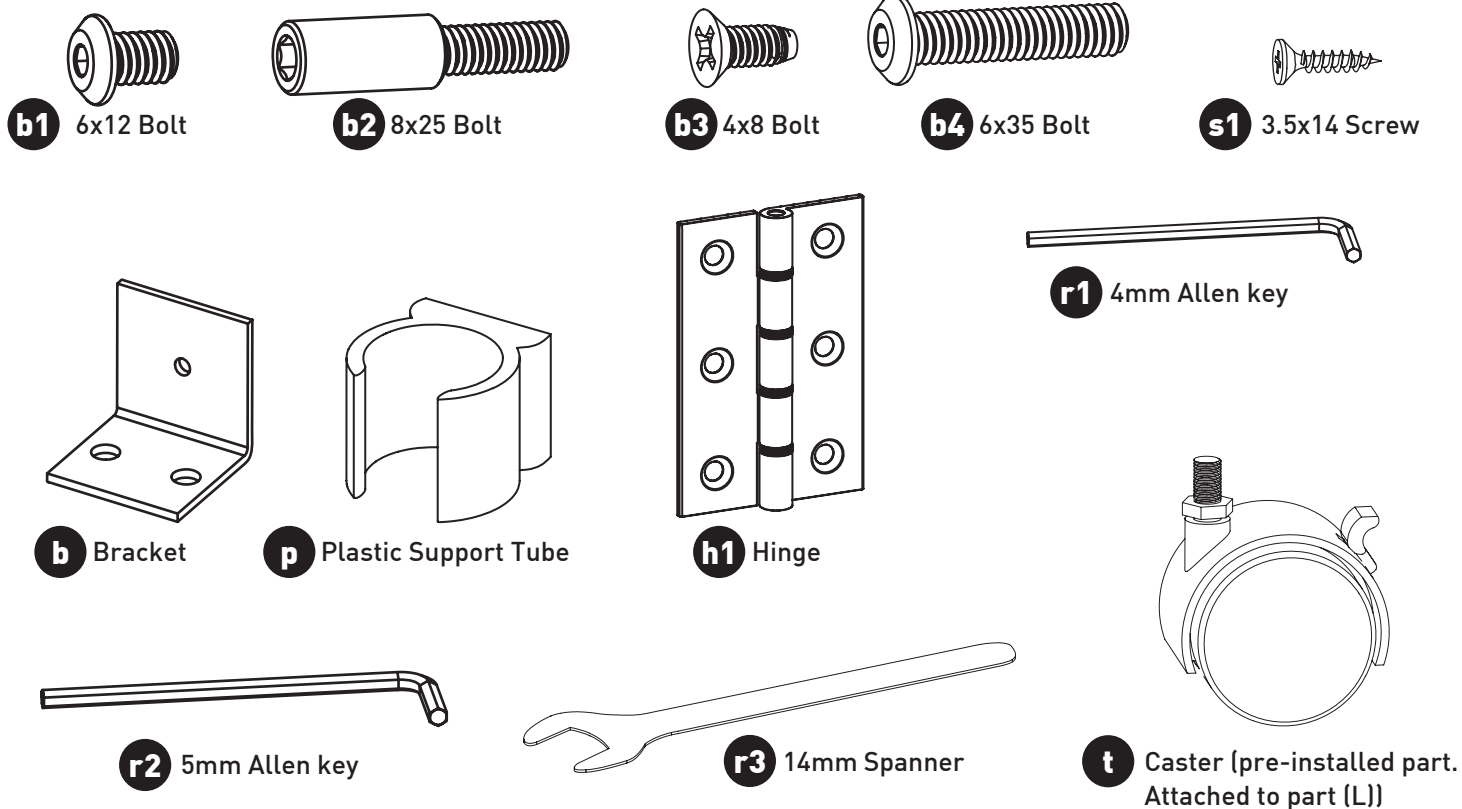
Wood Parts and Part Numbers



Wood Parts and Part Numbers

Ref.	Description	Part#					
	Cabinet Model#	3401 (White)					
A	Top Panel	3401PARTA					
A1	Leaf Panel	3401A1					
F	Fixed Shelf	3401F					
F1	Frame Leg Support	3401F1					
S	Side Leg Support	3401S					
L	Adjustable Leg with Caster	3401L					
R	Rail	3401R					

Hardware Included with Part Numbers



Item	Description	Part No.
b1	6x12 Bolt	3401B1
b2	8x25 Bolt	3401B2
b3	4x8 Bolt	3401B3
b4	6x35 Bolt	3401B4
b	Bracket	3401B
p	Plastic Support Tube	3401P
h1	Hinge	3401H1
r1	4mm Allen Key	3401R1
r2	5mm Allen Key	3401R2
r3	14mm Spanner	3401R3
s1	3.5x14 Screw	3401S1
t	Caster (pre-installed)	3401T



LIMITED WARRANTY

Arrow™ Sewing Furniture 10-Year Warranty

WHAT THIS WARRANTY COVERS: Arrow Companies, LLC (Arrow) provides limited warranty coverage to the original purchaser of this product against defects in materials or workmanship of Arrow furniture components for a period of ten years from the date of purchase. As used in this Warranty, "defect" means imperfections in components which substantially impair the utility of the product. This Warranty gives you specific legal rights, and you may also have other rights which vary from state to state.

HOW TO GET SERVICE: Simply contact Arrow at 1-800-533-7347 or CS@ArrowCabinets.com. When you request warranty service, you must also present proof of purchase documentation, which includes the date of purchase (detailed receipt), and photos of the product. Arrow will replace any defective part (at its sole option), excluding labor. Replacement parts will be warranted for only the remaining period of the original Warranty.

Replacement parts will be shipped freight prepaid on any initial warranty claim during first year of Warranty only. Warranty applies only to defects confirmed by Arrow Companies, LLC and will be replaced or repaired at Arrow's option. In the event parts are no longer available for a warranty claim, customer may receive brand new cabinet at a price equal to 60% off the MSRP of a current comparable model.

WHAT'S NOT COVERED: There is no warranty coverage for defects or conditions that result from the failure to follow product assembly instructions, information or warnings, misuse or abuse, intentional damage, fire, flood, alteration or modification of the product, or use of the product in a manner inconsistent with its intended use, nor any condition resulting from incorrect or inadequate maintenance, cleaning, or care, or neglect, cuts or scratches. Caster damage as a result of moving furniture fully loaded or with locked casters. Damage resulting from electrical surge or lightning. Use in commercial or education environments. Arrow Sewing Furniture is designed for residential use only.

ARROW SHALL HAVE NO LIABILITY for ANY INCIDENTAL OR CONSEQUENTIAL DAMAGES OF ANY KIND and all such damages are EXCLUDED FROM THIS WARRANTY, such as loss of use, disassembly, transportation, labor or damage to property on or near the product. Some states do not allow the exclusion or limitation of incidental or consequential damages, so the above limitation or exclusion may not apply to you. The Warranty cannot be transferred to subsequent owners or users of the product, and it shall be immediately void in the event the product is resold, transferred, leased or rented to any third party or person other than the original purchaser.

ADDITIONAL LIMITATIONS:

THERE ARE NO OTHER WARRANTIES APPLICABLE TO THIS PRODUCT. Under the laws of certain states, there may be no implied warranties from Arrow and all implied warranties, INCLUDING ANY IMPLIED WARRANTY OF MERCHANTABILITY OR FITNESS FOR A PARTICULAR PURPOSE are disclaimed where allowed by law. TO THE EXTENT ANY IMPLIED WARRANTIES ARE APPLICABLE, ANY IMPLIED WARRANTIES, INCLUDING ANY IMPLIED WARRANTY OF MERCHANTABILITY OR FITNESS FOR A PARTICULAR PURPOSE, ARE LIMITED IN DURATION TO THE DURATION OF THIS EXPRESS WARRANTY or the minimum period allowed by law, whichever is shorter. Some states do not allow limitations on how long an implied Warranty lasts, so the above limitation may not apply to you. This limited warranty gives you specific legal rights. This limited warranty does not, in any way, affect the rights given to you by law.

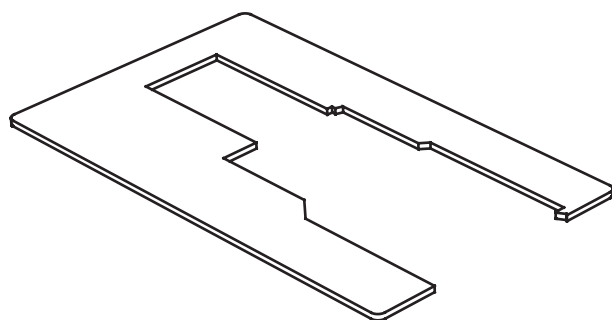
REGISTER YOUR PRODUCT: Original purchaser should register the purchase online at www.ArrowCabinets.com/warranty.



Accessories to Complete Your Sewing Experience

Custom Insert

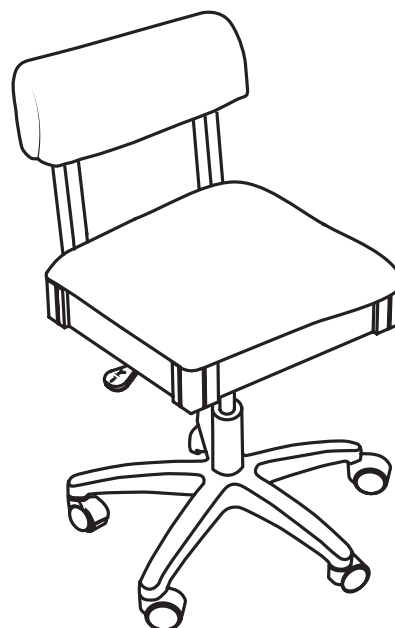
Enhance your sewing experience with a custom-made insert for your Arrow or Kangaroo cabinet. Inserts are designed to reduce the gap between the machine and cabinet opening. This provides an ergonomic work surface for the free arm of the sewing machine, allowing for straighter stitches, less fatigue and an overall better experience using your machine and cabinet.



Insert

Arrow Sewing Chairs

Our adjustable height sewing chair is a perfect accessory for any craft and sewing room. The chair's height is adjustable with easy to use controls and the cushions provide perfect lumbar support and comfort for those long sewing hours. Chair features five casters on a star base for greater movement at your sewing cabinet or crafting surface. Lift the seat cushion to reveal a hidden storage compartment for your small notions or patterns.



Hydraulic Sewing Chair

P.O. Box 307 Delavan, WI 53115
1-800-533-7347 Ext. 1
CS@ArrowCabinets.com
www.ArrowCabinets.com