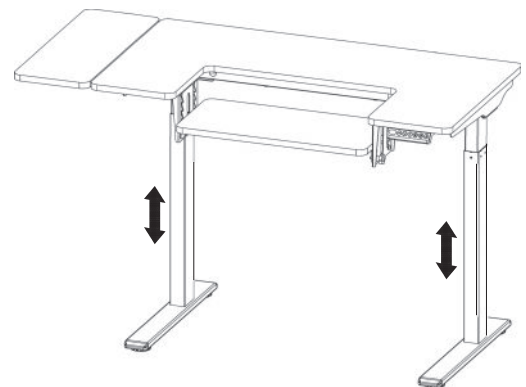




Eleanor

Serger & Sewing Table



Item No. 691
Assembly Manual

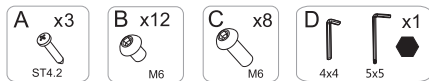
Arrow Sewing
208 E. Morrissy Dr.
Elkhorn, WI 53121
1-800-533-7347 Ext. 1
cs@arrowsewing.com
arrowsewing.com

Specifications

Column Type	2 Stages
Max. Weight Capacity(Main Table)	110 lbs (50 kg)
Max. Weight Capacity(Spliced Table)	22 lbs (10 kg)
Max. Weight Capacity(Adjustable Table)	5 Gears for Height Adjustment, Each Gear is 25.4mm, 26.4 lbs (12 kg)
Max. Speed	1"/S
Min. Height	28.7"(730mm)
Max. Height	48.4"(1230mm)
Main Desktop Size	43.3"(1100mm) in width and 23.6"(600mm) in depth
Spliced Desktop Size	9"(230mm) in width and 23.6"(600mm) in depth
Adjustable Desktop Size	22.8"(580mm) in width and 10.4"(265mm) in depth
Duty Cycle	10% (Working 2 minutes then stop 18 minutes)
Working Temperature	32° - 104° F

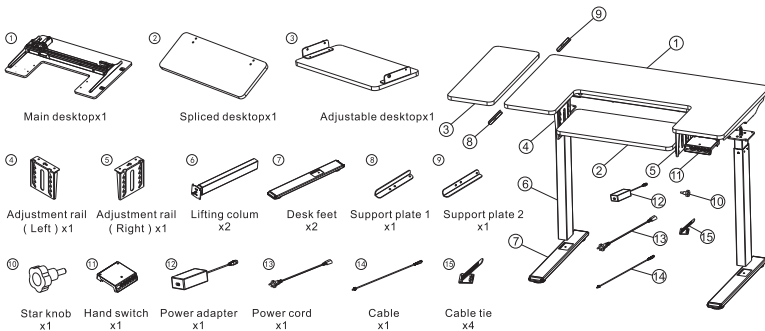
Accessory Package

Figures shown are for reference only. Please contact customer service if there are any accessory or tools missing.

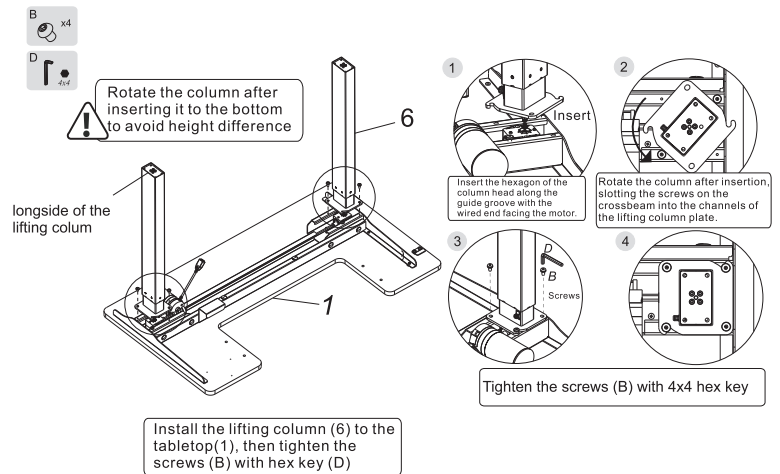


Parts Included

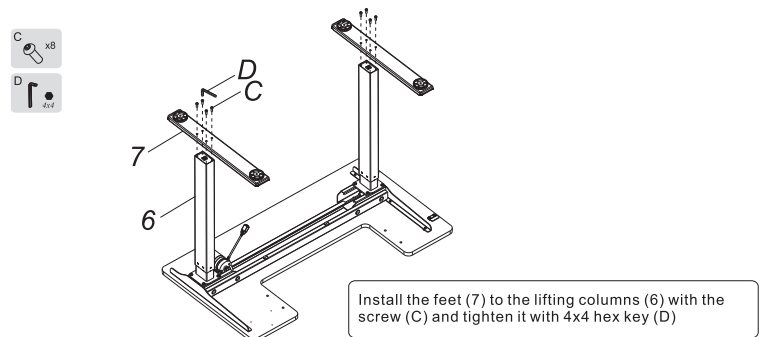
Diagram of Components



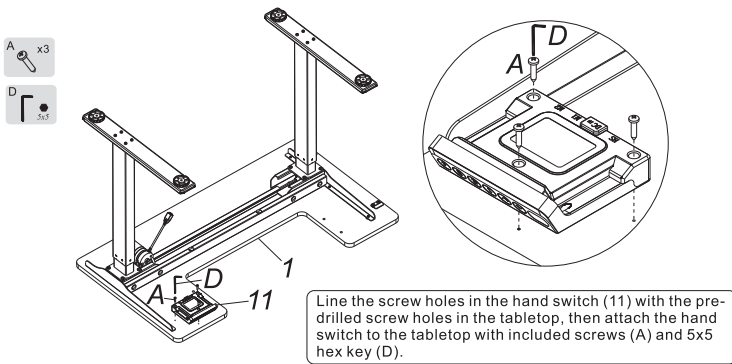
Step 1: Install the Lifting Columns



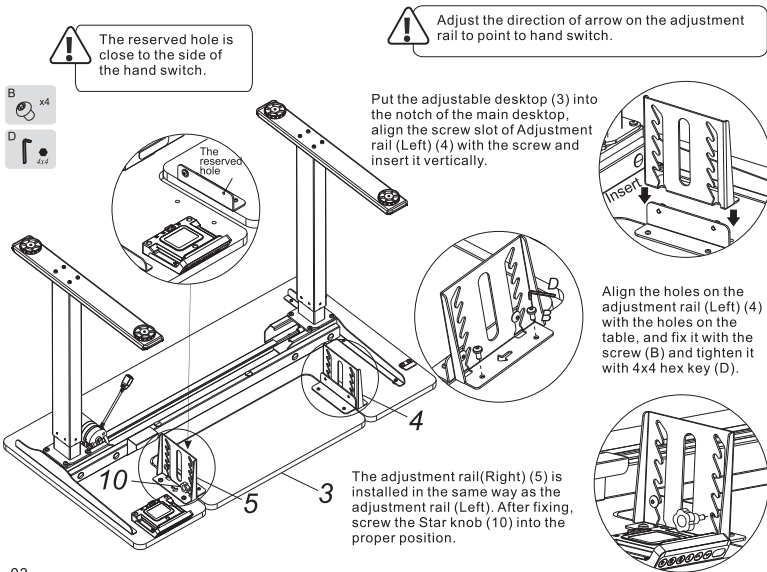
Step 2: Install the Feet



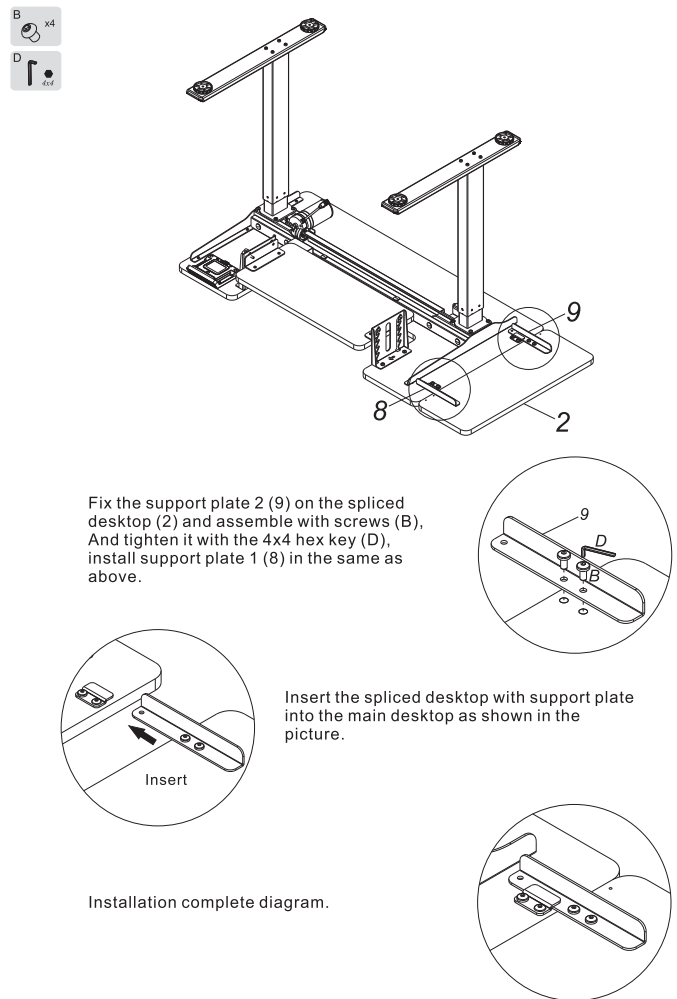
Step 3: Install the Hand Switch



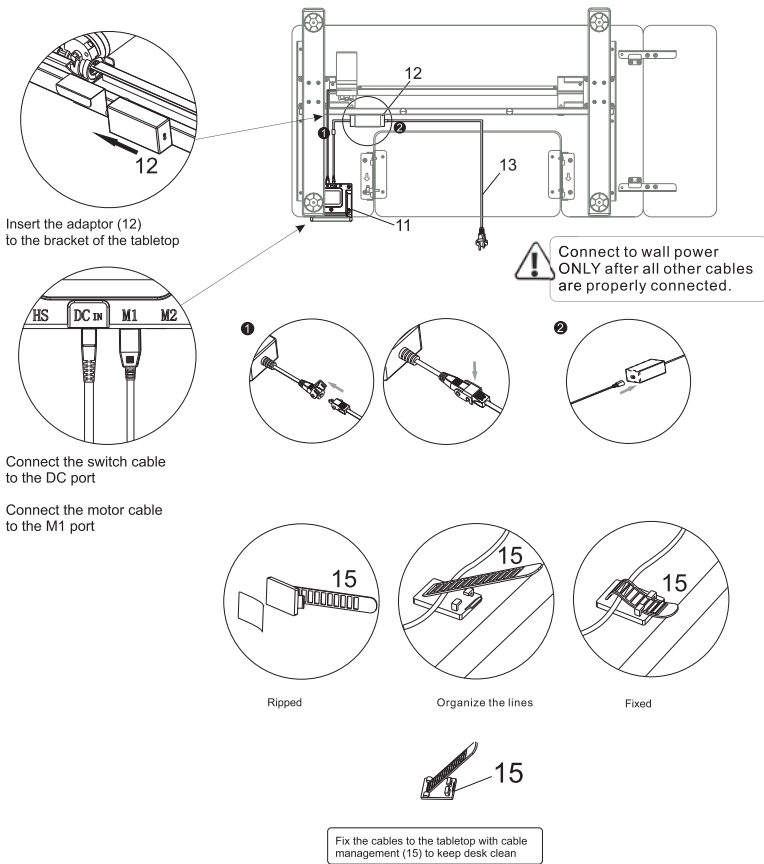
Step 4: Install the adjustable desktop



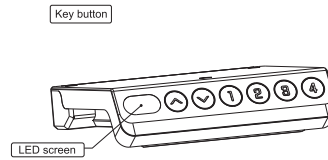
Step 5: Install the spliced desktop



Step 6: Connect Cables to the Adapter



Keypad Instruction



●	▲	Up button, adjust the desk upwards
●	▼	Down button, adjust the desk downwards
●	1	Position1, user's first stored height position
●	2	Position2, user's second stored height position
●	3	Position3, user's third stored height position
●	4	Position4, user's fourth stored height position

Operation Instruction

- Press the "▲" button to raise the desk; long press for continuous movement. The LED screen will show "top" when the desk reaches its highest position.
- Press the "▼" button to lower the desk; long press for continuous movement. The LED screen will show "bot" when the desk reaches its lowest position.

Memory Presets

- While the desk is idle, press and hold the "1" button for 3 seconds, a beep will sound and the display will show "S-1", meaning that the height is successfully saved to preset 1.
- Pressing the "1" button will now automatically adjust the height to the saved preset. Repeat above steps to override the memory setting.
- Repeat for presets "2" - "4"

Reset function

- If desk is malfunctioning or an error code appears, the control box may need to be reset. Press and hold the "3" and "4" keys together for 3 seconds to enter reset mode.
- After entering reset mode, the display will show "RST". Press and hold the "▼" key until the desk reaches its lowest point and rebounds slightly. The display will show "bot", showing that the reset is complete.

29V DC Power Supply Function

- While the table is not in the reset state, after idling for 30 seconds, the 29V DC power supply function will be turned on, and the 2pin connector at the back of the control box will output a 29V DC voltage.

Anti-collision sensitivity adjustment

- When the anti-collision function is turned on, when the desk rises or descends, it will rebound immediately when it encounters an obstacle for protection. If the desk stops unexpectedly without experiencing a collision or does not stop when colliding with another object, the anti-collision sensitivity may need to be changed.
- Press and hold the "▲" and "▼" keys together for 3 seconds to adjust between anti-collision sensitivity levels.
- There are 4 sensitivity levels: A-0, A-1, A-2, and A-3. A-0 = off; A-1 = low sensitivity, A-2 = medium sensitivity, A-3 = high sensitivity.

Troubleshooting

- The display will show "RST" or "rSt" when desk is in reset mode. Press and hold the "▼" key until the desk reaches its lowest point and rebounds slightly. The display will show "bot", showing that the reset is complete.
- If the display shows E01 or E02, please let the desk idle for at least 18 minutes before operating it again.
- If any other codes appear and the desk does not respond to holding down the "▼" button or attempting to enter reset mode, please confirm all cables are properly connected and undamaged. Unplug the desk for at least 10 seconds. When replugged, the display shows "RST" or "rSt", long press the "▼" button to enter reset mode.
- If the above steps are unsuccessful at troubleshooting your issues, please contact customer service.
- If the desk rises unexpectedly slow, slides down on its own, or frequently enters reset mode, please double check that the desk is not overloaded (weight capacity: 110 lbs.)
- If the lifting columns are uneven and/or not the same height, please refer to the "standing desk leg problem" video at <https://www.flexispot.com/deskresources#3> for troubleshooting.

Attention

- Power supply: AC100 - 240 V, frequency 50/60HZ;
 - Working environment: 32° - 104° F;
 - Before cleaning, you have to unplug the power supply cable. Clean with a slightly damp cloth to wipe away the surface dust. Keep all electrical components away from liquids. Do not damage the connection line and keep the plug in a safe position.
 - Inside the control box, there are electronic components, metal parts, plastic parts, wires and so on. They should be disposed in accordance with the local laws and regulations. They cannot be disposed as household waste.
 - Before using the product, please make sure the product has been installed correctly.
 - Before starting use of the product, please read the instructions to fully understand all the product's functions and settings.
 - Keep children away from electric height-adjustable desks, control units and handsets.
- Manufacturer is not responsible of any damages that result from children's unpredictable behaviour.
- Slight noise caused by the multi wedge belt or brake system will not impact the use of this product.
 - Do not use corrosive or abrasive materials to clean this product and please dispose of cleaning solutions in an environmentally friendly manner.
 - Understand the risks associated with using this product. Children or those with cognitive impairment should not use this product without supervision.
 - Please operate in a clean and safe environment. For example, do not left around your tools. And always be careful to deal with packaging materials, in order to avoid any kinds of possible danger. Potential choking risk exists when children play with plastic bags!
 - If necessary, retain the original package for future transportation.

Recycling and Disposal



This product cannot be disposed of as household waste. To prevent damage to the environment, this product should be recycled. Please use the relevant recycling systems available to you or contract the distributor or manufacturer for recycling assistance.



LIMITED WARRANTY

Arrow Classic Sewing Furniture Warranty

WHAT THIS WARRANTY COVERS: Arrow Companies, LLC (Arrow) provides limited warranty coverage to the original purchaser of this product against defects in materials or workmanship of Arrow furniture components for a period of five (5) years on the motor, frame and other mechanisms, and two (2) years on the controller, switch, and electronics from the date of purchase. As used in this Warranty, "defect" means imperfections in components which substantially impair the utility of the product. This Warranty gives you specific legal rights, and you may also have other rights which vary from state to state.

HOW TO GET SERVICE: Simply contact Arrow at 1-800-533-7347 or CS@ArrowSewing.com. When you request warranty service, you must also present proof of purchase documentation, which includes the date of purchase (detailed receipt), and photos of the product. Arrow will replace any defective part (at its sole option), excluding labor. Replacement parts will be warranted for only the remaining period of the original Warranty.

Replacement parts will be shipped freight prepaid on any initial warranty claim during first year of Warranty only. Warranty applies only to defects confirmed by Arrow Companies, LLC and will be replaced or repaired at Arrow's option. In the event parts are no longer available for a warranty claim, customer may receive brand new cabinet at a price equal to 60% off the MSRP of a current comparable model.

WHAT'S NOT COVERED: There is no warranty coverage for defects or conditions that result from the failure to follow product assembly instructions, information or warnings, misuse or abuse, intentional damage, fire, flood, alteration or modification of the product, or use of the product in a manner inconsistent with its intended use, nor any condition resulting from incorrect or inadequate maintenance, cleaning, or care, or neglect, cuts or scratches. Caster damage as a result of moving furniture fully loaded or with locked casters. Damage resulting from electrical surge or lightning. Use in commercial or education environments. Arrow Sewing Furniture is designed for residential use only.

ARROW SHALL HAVE NO LIABILITY for ANY INCIDENTAL OR CONSEQUENTIAL DAMAGES OF ANY KIND and all such damages are EXCLUDED FROM THIS WARRANTY, such as loss of use, disassembly, transportation, labor or damage to property on or near the product. Some states do not allow the exclusion or limitation of incidental or consequential damages, so the above limitation or exclusion may not apply to you. The Warranty cannot be transferred to subsequent owners or users of the product, and it shall be immediately void in the event the product is resold, transferred, leased or rented to any third party or person other than the original purchaser.

ADDITIONAL LIMITATIONS: THERE ARE NO OTHER WARRANTIES APPLICABLE TO THIS PRODUCT. Under the laws of certain states, there may be no implied warranties from Arrow and all implied warranties, INCLUDING ANY IMPLIED WARRANTY OF MERCHANTABILITY OR FITNESS FOR A PARTICULAR PURPOSE are disclaimed where allowed by law. TO THE EXTENT ANY IMPLIED WARRANTIES ARE APPLICABLE, ANY IMPLIED WARRANTIES, INCLUDING ANY IMPLIED WARRANTY OF MERCHANTABILITY OR FITNESS FOR A PARTICULAR PURPOSE, ARE LIMITED IN DURATION TO THE DURATION OF THIS EXPRESS WARRANTY or the minimum period allowed by law, whichever is shorter. Some states do not allow limitations on how long an implied Warranty lasts, so the above limitation may not apply to you. This limited warranty gives you specific legal rights. This limited warranty does not, in any way, affect the rights given to you by law.

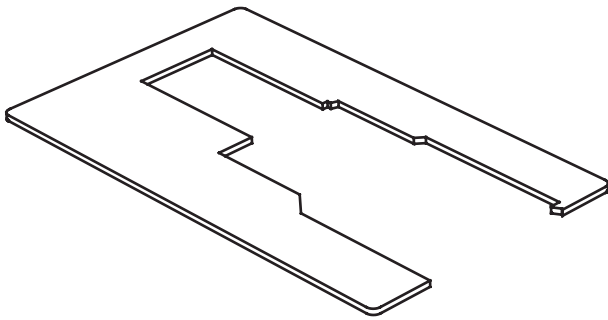
REGISTER YOUR PRODUCT: Original purchaser should register the purchase online at www.ArrowSewing.com/warranty.

COMPLETE YOUR SEWING STUDIO!

Elevate your sewing experience with Arrow's Best-Selling Accessories!

Custom Sewing Inserts

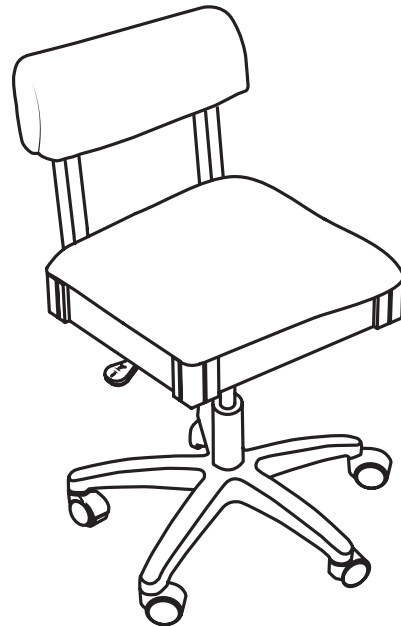
Enhance your sewing experience with a custom acrylic sewing insert! Custom acrylic sewing inserts are designed to fill the gap between your sewing machine and sewing cabinet's lift opening to create a flush, ergonomic surface for flat bed sewing. To ensure a perfect fit, custom acrylic sewing inserts are built specifically for your sewing machine and sewing cabinet combination. Say hello to happy wrists, straighter stitches, and an elevated sewing experience!



Custom Sewing Insert

Sewing Chairs

Arrow's #1 Rated Height Adjustable Sewing Chair is a must have accessory for your dream sewing room! Cute, comfortable and convenient - our lovable sewing chairs feature vibrant sewing themed patterns, 360° swivel access and lumbar support for long hours at your workstation. Don't look now, but under every seat cushion is a hidden storage compartment to store your notions and patterns! Available in 10 colors to perfectly match your sewing sanctuary!



Height Adjustable Sewing Chair